



# SUITE 200

300 Tri State International

39,746 RSF

VIRTUAL TOUR



For more information, or to arrange a tour, please contact:

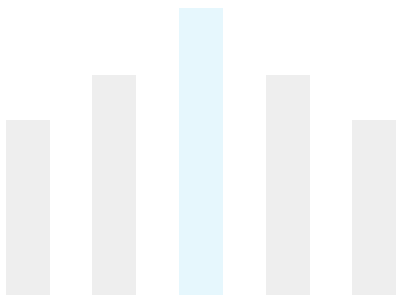
**JOEL BERGER**  
(630) 225-2600 | [jberger@bradfordallen.com](mailto:jberger@bradfordallen.com)

**NORM MURDOCH**  
(630) 239-4082 | [nmurdoch@bradfordallen.com](mailto:nmurdoch@bradfordallen.com)

**STACY DITKA**  
(312) 480-1886 | [sditka@bradfordallen.com](mailto:sditka@bradfordallen.com)

leased, owned + managed by

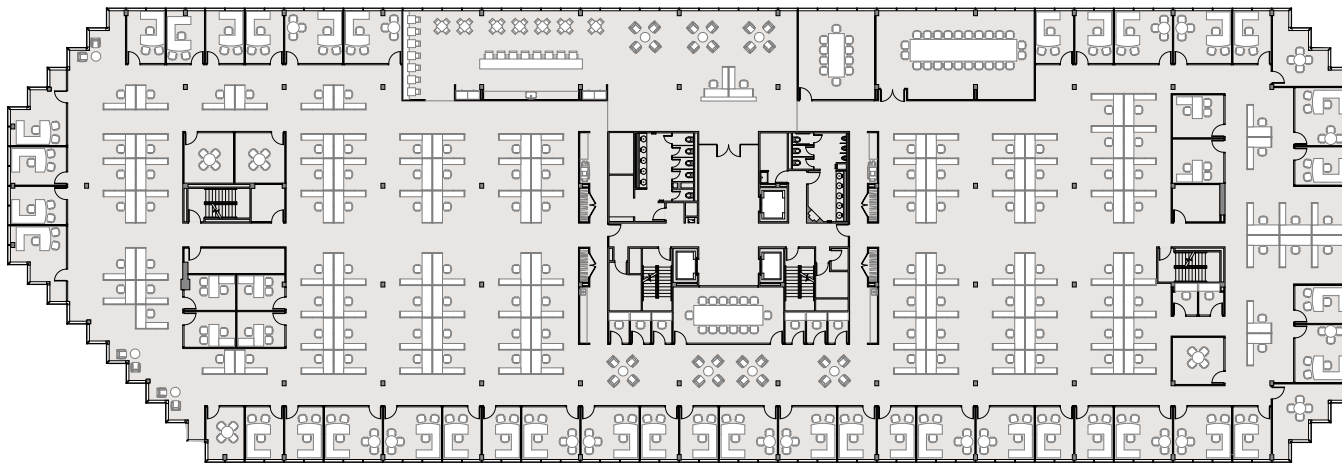
**BA BRADFORD ALLEN**



## SUITE 200

300 Tri State International

39,472 RSF



\*Conceptual plan. Furniture and office layouts have been added for presentation purposes only.



For more information, or to arrange a tour, please contact:

**JOEL BERGER**

(630) 225-2600 | [jberger@bradfordallen.com](mailto:jberger@bradfordallen.com)

**NORM MURDOCH**

(630) 239-4082 | [nmurdoch@bradfordallen.com](mailto:nmurdoch@bradfordallen.com)

**STACY DITKA**

(312) 480-1886 | [sditka@bradfordallen.com](mailto:sditka@bradfordallen.com)

leased, owned + managed by

**BA** BRADFORD  
ALLEN

# SUITE 200

300 Tri State International

39,472 RSF



\*Conceptual plan. Furniture and office layouts have been added for presentation purposes only.



For more information, or to arrange a tour, please contact:

**JOEL BERGER**

(630) 225-2600 | [jberger@bradfordallen.com](mailto:jberger@bradfordallen.com)

**NORM MURDOCH**

(630) 239-4082 | [nmurdoch@bradfordallen.com](mailto:nmurdoch@bradfordallen.com)

**STACY DITKA**

(312) 480-1886 | [sditka@bradfordallen.com](mailto:sditka@bradfordallen.com)

leased, owned + managed by

**BA** BRADFORD  
ALLEN